

Layer Manager

- View
- Overview
- fr000047a3_07_if166l_tr3_corr_p_2014para

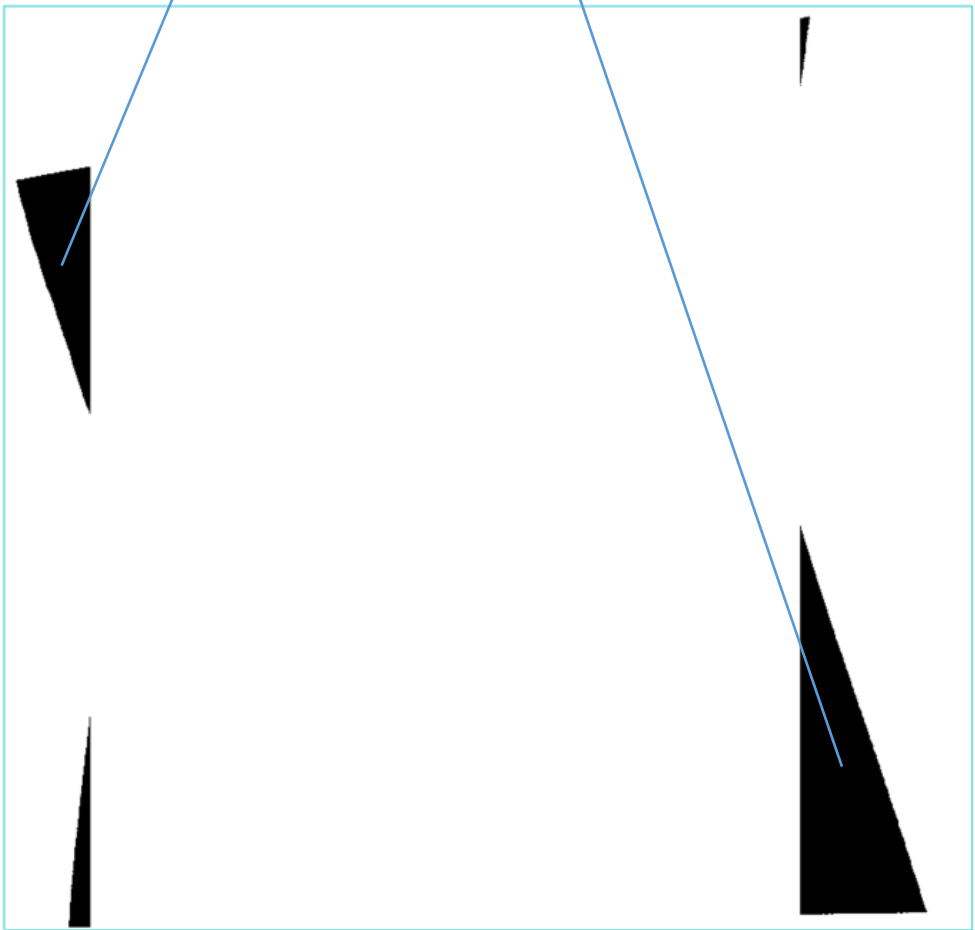
Toolbox

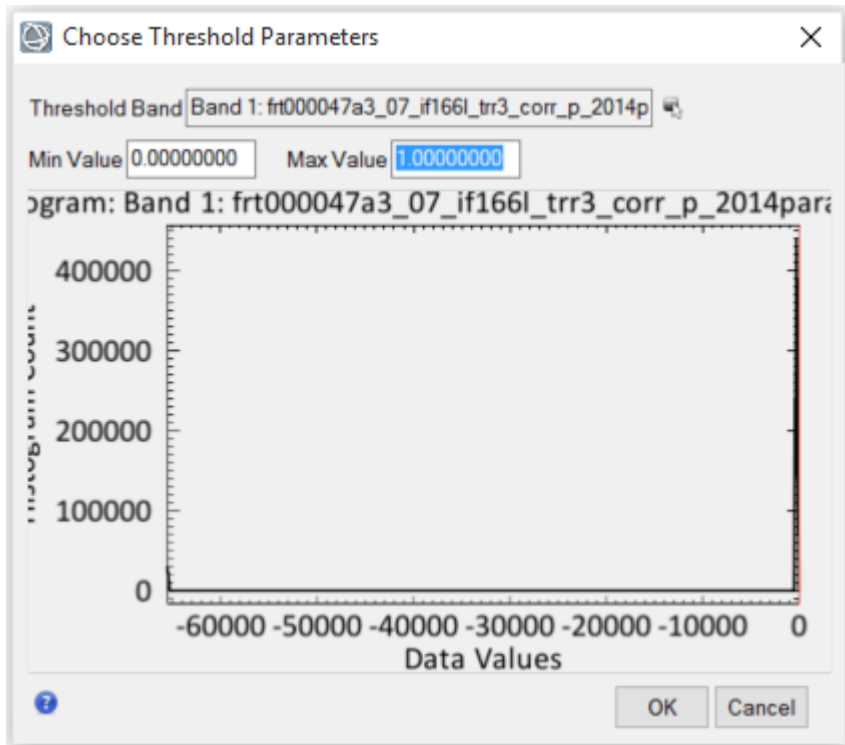
Search the toolbox

/Regions of Interest/Band Threshold to ROI

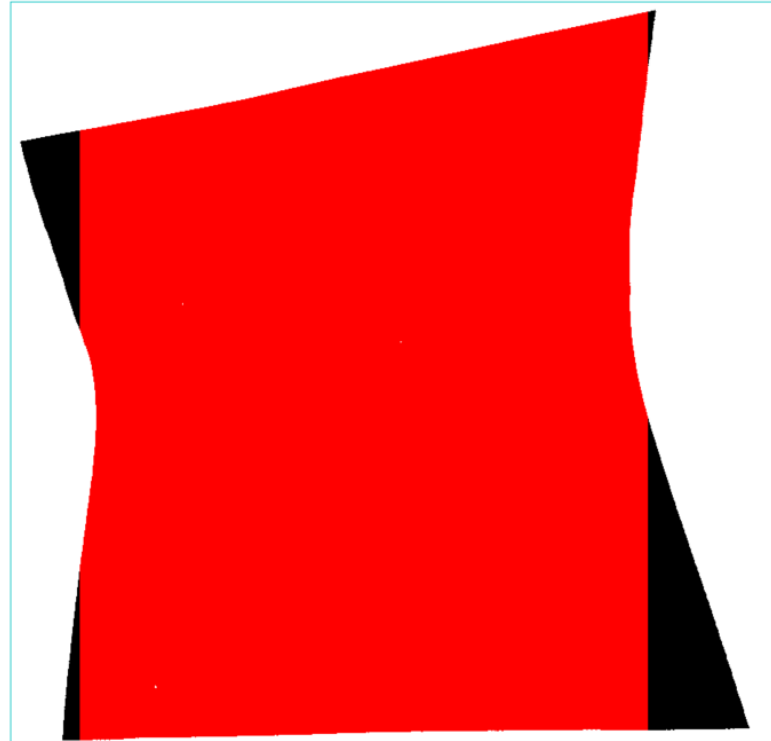
- Favorites
- Anomaly Detection
- Band Algebra
 - Band Math
 - Band Ratios
 - Spectral Indices
- Change Detection
- Classification
- Feature Extraction
- Filter
- Geometric Correction
- Image Sharpening
- LiDAR
- Mosaicking
 - Pixel Based Mosaicking
 - Seamless Mosaic
- Radar
- Radiometric Correction
- Raster Management
 - Convert Complex Data
 - Convert Interleave
 - Create Coordinate System String
 - Create ENVI Meta File
 - Data Viewer
- Data-Specific Utilities
 - Destripe
 - Edit ENVI Header
 - Generate Test Data
- IDL
- Layer Stacking
- Masking
 - New File Builder
 - Replace Bad Lines
 - Reproject Raster
 - Resize Data
 - Rotate/Flip Data
 - Stretch Data
- Regions of Interest
 - Band Threshold to ROI**
 - Buffer Zone from ROIs
 - Classification Image from ROIs
 - Merge (Union/Intersection) ROIs
 - ROI Separability
 - Subset Data from ROIs
 - Vector to ROI
- Spatiotemporal Analysis
- SPEAR
- Spectral
 - Build 3D Cube
 - Mapping Methods
 - Pixel Purity Index
 - SMACC Endmember Extraction
 - Spectral Analyst
 - Spectral Libraries

The black part is Wrong value (-65535)

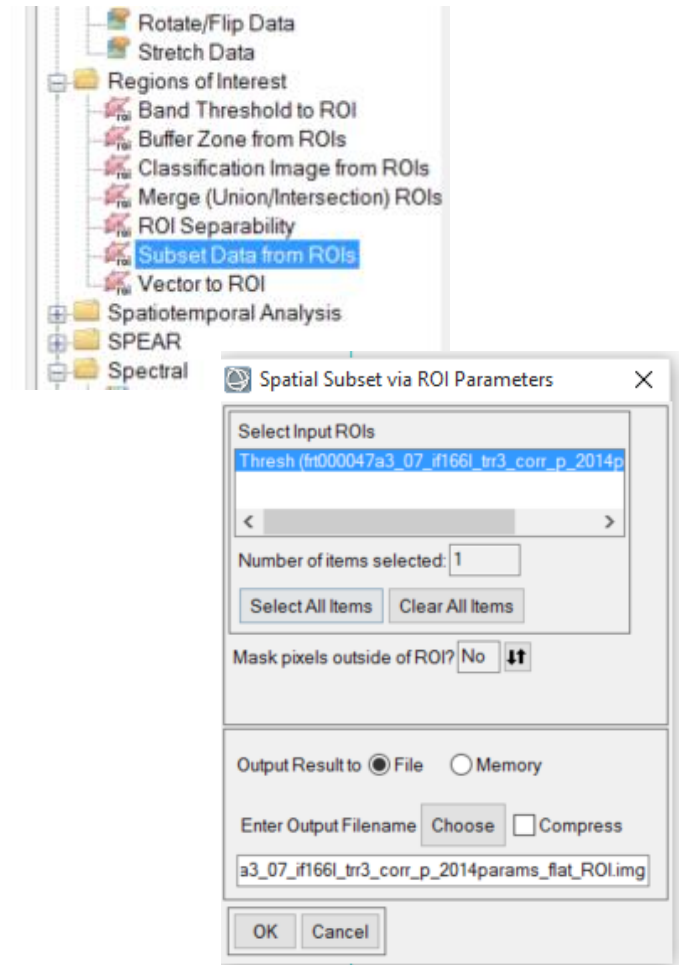




Click OK to create a ROI by Threshold, then Load ROI



The red part is the ROI generated.
Output subset data from ROI



Layer Manager

- View
 - Overview
 - frt000047a3_07_if166l_tr3_corr_p_2014params_flat_ROI.img
 - ROI Resize (OLINDEX3_flatfrt000047a3_07_if166l_tr3_corr_p_2014params_flat
 - frt000047a3_07_if166l_tr3_corr_p_2014params_flat.img
- View
 - Overview
 - frt000047a3_07_if166l_tr3_corr_p_2014params_flat_ROI.img
 - ROI Resize (BD1300_flatfrt000047a3_07_if166l_tr3_corr_p_2014params_flat
 - ROI Resize (BD1500_2_flatfrt000047a3_07_if166l_tr3_corr_p_2014params_flat
 - ROI Resize (BD2190_flatfrt000047a3_07_if166l_tr3_corr_p_2014params_flat

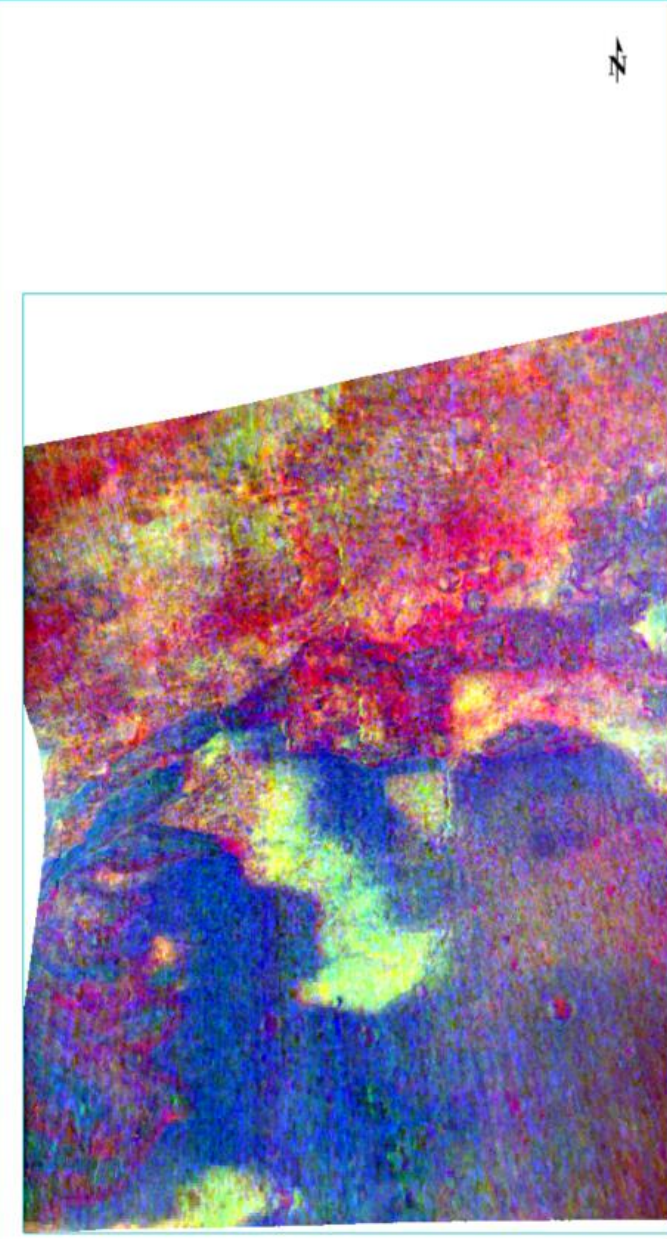
Data Manager

- frt000047a3_07_if166l_tr3_corr_p_2014params_flat.img
- New ROIs
 - Thresh (frt000047a3_07_if166l_tr3_corr_p_2014params_flat.img)
 - frt000047a3_07_if166l_tr3_corr_p_2014params_flat_ROI.img
 - ROI Resize (OLINDEX3_flatfrt000047a3_07_if166l_tr3_corr_p_2014para
 - ROI Resize (BD1300_flatfrt000047a3_07_if166l_tr3_corr_p_2014params
 - ROI Resize (LCPINDEX2_flatfrt000047a3_07_if166l_tr3_corr_p_2014par
 - ROI Resize (HCPINDEX2_flatfrt000047a3_07_if166l_tr3_corr_p_2014pai
 - ROI Resize (BD1400_flatfrt000047a3_07_if166l_tr3_corr_p_2014params
 - ROI Resize (BD1435_flatfrt000047a3_07_if166l_tr3_corr_p_2014params

File Information
Band Selection

Load in New View

Load Data Load Grayscale



Toolbox

Search the toolbox

/Regions of Interest/Subset Data from R

- Favorites
- Anomaly Detection
- Band Algebra
 - Band Math
 - Band Ratios
 - Spectral Indices
- Change Detection
- Classification
- Feature Extraction
- Filter
- Geometric Correction
- Image Sharpening
- LiDAR
- Mosaicking
 - Pixel Based Mosaicking
 - Seamless Mosaic
- Radar
- Radiometric Correction
- Raster Management
 - Convert Complex Data
 - Convert Interleave
 - Create Coordinate System St
 - Create ENVI Meta File
 - Data Viewer
 - Data-Specific Utilities
 - Destripe
 - Edit ENVI Header
 - Generate Test Data
- IDL
- Layer Stacking
- Masking
- New File Builder
- Replace Bad Lines
- Reproject Raster
- Resize Data
- Rotate/Flip Data
- Stretch Data
- Regions of Interest
 - Band Threshold to ROI
 - Buffer Zone from ROIs
 - Classification Image from ROI
 - Merge (Union/Intersection) RC
 - ROI Separability
 - Subset Data from ROIs
 - Vector to ROI
- Spatiotemporal Analysis
- SPEAR
- Spectral
 - Build 3D Cube
 - Mapping Methods
 - Pixel Purity Index
 - SMAACC Endmember Extract
 - Spectral Analyst
 - Spectral Indices